

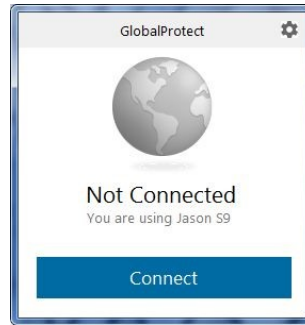
Palo Alto / Duo VPN connection

In the lower right corner near the system clock, look for this icon.

Left Click on the Icon



Now click on the blue connect bar



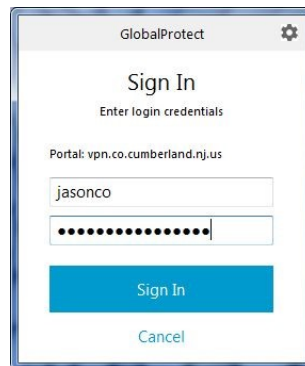
Enter your county username and Password.

DO NOT PRESS ENTER YET!

Press the green button on your DUO key fob.

This will provide a one time code .

Now add a , (Comma) plus this one time code to your password and press enter.



For Example, if your password is Summer2019 and the one-time code is 144987 your password would be entered like this Summer2019,144987

If your credentials are accepted, you will see the gray globe turn blue and a check mark inside showing that you are successfully connected

